

HURRICANE[®] BRAVO



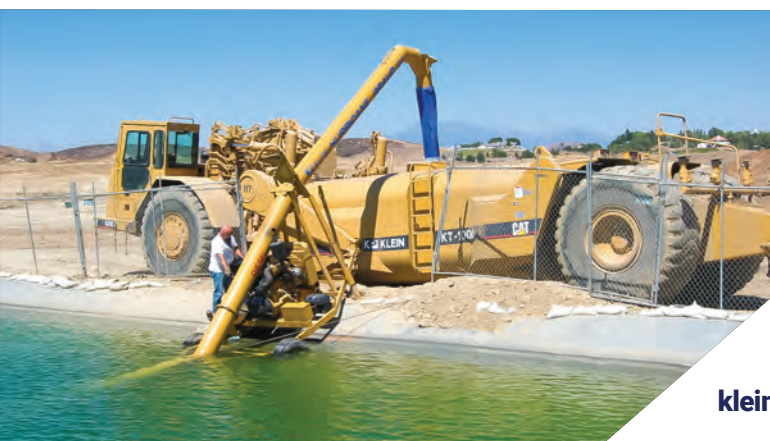
Fast, Easy, Efficient Water Recovery

When you're in the middle of a job and time is money, the last thing you want to do is wait around for water recovery. Enter the Hurricane Bravo™ — one of our many innovations designed to improve efficiency and results in dirt-moving operations. Trusted by Klein Products customers worldwide, this engine-driven, high-volume pump system makes it easy to quickly recover mobile watering equipment anywhere you have access to a lake, pond or man-made reservoir.

Proven Value Since 1957

- Delivers water at an extraordinary rate of **4,500–5,000 gallons** per minute (*approximately)
- Efficiently pumps from any lake, pond or reservoir — with only a 4-foot water depth required
- Portable, self-contained and **easy to transport**
- Quick and simple to set up
- Provides **long-lasting quality** in even the most extreme environments

**Actual capacity subject to change depending on jobsite variables*



The Klein Products factory has received its certificate of registration declaring organization system of quality management is in conformance with ISO 9001:2015

kleinproducts.com | CA: 909-460-4546 | sales@kleinproducts.com

STANDARD FEATURES

Precision-manufactured and balanced for consistent high-quality performance and low-cost maintenance

- 4,500–5,000 GPM maximum capacity* water pump with heavy-duty cast iron pump bowl, bronze impeller, oil-lubricated bearings, extreme service seal system and self-cleaning galvanized suction screen
- Completely self-contained 12-foot steel discharge piping with hinged anti-vacuum downspout and self-contained design that enables convenient, easy conversion from transport position to operating position
- Polyvinyl discharge hose
- Piping mast constructed of heavy-duty rectangular structural steel tubing
- Discharge pipe guide/support wires
- Choice of diesel engine with radiator and radiator guard, 12-volt electrical system, dry-type air cleaner, muffler, low-oil/high-temp auto shutdown system, alternator, fuel filter, lubrication oil pump, rubber engine mounts and locking-type throttle
- Clutch with easy manual shift capabilities to enable quick, safe pump engagement/disengagement
- 28-gallon capacity aluminized steel, portable fuel tank with fuel gauge (provides enough fuel for a full day of continuous pump usage)
- Heavy-duty industrial battery, group 27C, minimum 675 CCA, with non-corrosive protective enclosure
- 16-ounce pump oil reservoir visual indicator
- Lockable control panel with key switch start (helps prevent unauthorized use of pump), tachometer, hour meter, temperature gauge, oil pressure gauge, amp meter and engine angle indicator
- Trailer chassis constructed of heavy-duty rectangular structural steel tubing
- 2-foot ball-type hitch coupler with safety chains
- 6,000-pound capacity axle with leaf suspension
- Automatic trailer bearing lubrication system
- On/off highway tires and wheels
- Heavy-duty, front-mounted trailer chassis jack system with 1,400-pound capacity winch and swivel sand shoe (for easy setup on any terrain)
- Right- and left-side multi-position support legs with swivel sand shoe (for easy setup on any terrain)
- Hitch-coupler safety chains, heavy-duty guards for driveline and engine flywheel, and protective battery to promote safe equipment operation
- Polyurethane enamel in one color of your choice
- Two hard copy maintenance and operation manuals or an electronic digital version

*Actual capacity subject to change depending on jobsite variables



*Actual capacity subject to change depending on jobsite variables

HURRICANE BRAVO SPECIFICATIONS	STANDARD		EXTENDED SHAFT	
Overall Width	87 in. (2,209.8 mm)		87 in. (2,209.8 mm)	
Pump Bowl to Center of Discharge	378 in. (9,601.2 mm)		510 in. (12,954 mm)	
Pump Bowl to Axle	113 in. (2,870.2 mm)		235 in. (5,969 mm)	
Pump Bowl to Side Positioning Legs	209 in. (5,308.6 mm)		331 in. (8,407.4 mm)	
Axle to Side Positioning Legs	96 in. (2,438.4 mm)		96 in. (2,438.4 mm)	
Ground Clearance to Discharge	Adjustable from 120 in. (3,048 mm) to 144 in. (3,657.6 mm) depending on launch ramp angle		Adjustable from 120 in. (3,048 mm) to 144 in. (3,657.6 mm) depending on launch ramp angle	
Minimum Water Level	48 in. (1,219 mm)		48 in. (1,219 mm)	

OPTIONAL FEATURES

- Suction pipe extension
- Choice of popular engines
- Corrosion-resistance treatment of internal waterway
- Corrosion-resistance treatment of entire exterior of pump, piping, frame and mast
- Four-point lifting harness kit
- Highway kit: fenders, lights, etc.
- Pintle eye tow hitch
- Electric motor powered pump
- Emergency spare parts kit
- Export preparation

